



---

# CBSO Proms '83

---

Birmingham Town Hall

Programme

City of Birmingham  
Symphony Orchestra



Orchestra of the West Midlands County



RON GOODWIN

LICENSING arrangements in the Basement Bar: Persons under 14 are not admitted. Persons between 14 and 18 are admitted and may purchase goods excluding alcohol and cigarettes. Licensed Bar remains open after the concert.

There are salespoints for soft drinks in the Lower Gallery. Snacks and hot drinks are available in the Basement Bar before the concert and during the Interval.

The use of any photographic or sound-recording equipment is strictly forbidden without the prior authority of CBSO Society Limited

Hearing Aids:  
An Inductive Loop System has been installed in the Town Hall by the British Association of the Hard of Hearing with funds provided by Marks and Spencer Limited. Wearers of hearing aids should use the 'T' (Telephone) switch on their hearing aids and may need to turn up the volume.

The CBSO Society gratefully acknowledges the corporate donations to the Orchestra's general funds by the following companies:  
Baring Brothers & Co Ltd (Merchant Bankers)  
Delta Group  
Marks & Spencer Limited

The CBSO Society Limited receives financial assistance from the West Midlands County Council, the Birmingham District Council and is



**CBSO Society Limited**  
9 Margaret Street, Birmingham B3 3RP  
Telephone 021-236 1555  
General Manager Edward Smith



Friday 1 July 1983  
Town Hall, Birmingham at 7.30pm

City of Birmingham Symphony Orchestra  
Leader Felix Kok  
Conductor RON GOODWIN

**Music from the Movies**

Brazil	Aro Barroso
Chariots of Fire	Vangelis
Clash of Loyalties	Ron Goodwin
Cherokee	Ray Noble
Medley:	
The Carousel Waltz	Richard Rodgers
Some Enchanted Evening from <i>South Pacific</i>	
Oklahoma	
Theme from ET	John Williams
The Big Country	Jerome Moross
Tribute to Ingrid Bergman:	
The Bells of St Mary's	Adams & Furber
Intermezzo from <i>Escape         to Happiness</i>	Provost
Nick Nack Paddywack	Trad.
As Time Goes By from <i>Casablanca</i>	Hupfield
Theme from <i>Where     Eagles Dare</i>	Ron Goodwin
South Rampart Street Parade	Bauduc-Haggart
War Years Medley:	
Colonel Bogey	Alford & Arnold
The White Cliffs of Dover	Kent
Bless 'em All	Godfrey
We'll Meet Again	Parker

This concert is being recorded by BBC Radio 2 for transmission at a later date.

Patrons sitting in the front of the Ground Floor are respectfully requested not to use the exits at the platform end of the Hall, until the musicians using the front platform steps have made their exit to the dressing rooms.

**Impressions**

(or It Nearly Always Rains on Free Days!)  
drawings by CBSO viola player Diana Drewer, on view in the Basement Foyer during the CBSO Proms.

*All arrangements by Ron Goodwin*

*There will be one interval*



starring Juliet Greco in 1958. Ron has gone on to score over sixty films including such box-office successes as *633 Squadron*, *Where Eagles Dare*, *Those Magnificent Men In Their Flying Machines*, *Monte Carlo or Bust*, *Battle of Britain*, Alfred Hitchcock's *Frenzy*, *Candleshoe* and *Force Ten From Navarone*. He recently completed his sixth score for Walt Disney *The Spaceman and King Arthur*.

1978 also marked Ron Goodwin's twenty fifth year broadcasting with various BBC orchestras. His radio career started as an arranger for some of the country's top band leaders – Ted Heath, Stanley Black and Geraldo, but Ron was soon to form his own concert orchestra. *Early morning music* shows and *Variety Playhouse* replacing Vic Oliver, are among earlier credits.

Ron Goodwin is very much in demand on the concert platform, both here and abroad to present his kind of music. He regularly appears and tours with the Royal Liverpool Philharmonic Orchestra, Bournemouth Symphony Orchestra, Royal Philharmonic Orchestra, Toronto Symphony Orchestra, the symphony orchestras of Brisbane, Melbourne and Sydney and with the New Zealand Symphony Orchestra. Tonight marks Ron's second visit to Birmingham Town Hall this year. He recently completed the score for Jorephani's *A Clash of Loyalties*, to be heard in tonight's programme. Later this year Ron returns to New Zealand to make more recordings and film music.

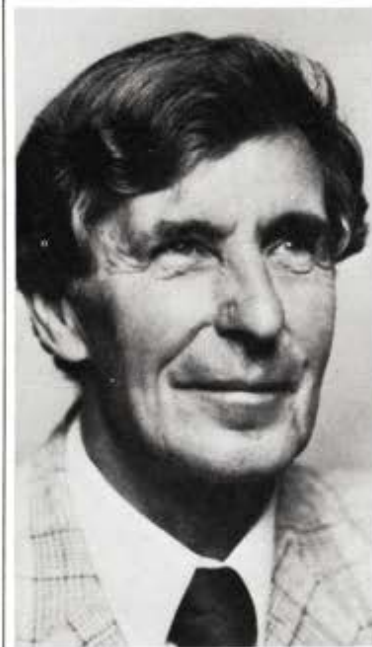
RON GOODWIN is without doubt one of the entertainment industry's most versatile and complete musical talents. His music ranges from jazz to classical treatments. He broadcasts, records, composes film music and appears on the concert platform. He is a perfectionist with an enormous sense of fun, which has earned him the deep regard of colleagues throughout show business.

Attention was focused on *Ron Goodwin and His Concert Orchestra* after George Martin – who was later to produce the Beatles' albums – put him under contract to record some of his own arrangements. It was the start of a long and happy association. Ron was Musical Director for the classic Peter Sellers albums and for countless other best sellers. His *The Legend of the Glass Mountain* for example became the top-selling album of EMI's Studio Two series. In 1975 he received a gold disc to mark the sale of one million albums with his concert orchestra. Recent albums include *The Big Sounds of Ron Goodwin*, *Rhythm and Romance*, *The Very Best of Ron Goodwin* and *Going Places*. A few years ago, Ron celebrated a double anniversary: twenty five years as a recording artist with EMI, the occasion marked with the release of a special double album *The First 25 Years*; and twenty years as a film composer.

His first film score was for *Whirlpool*



You can now show your support of the CBSO by wearing the new real silver pin of our logo shown left. Suitable for both ladies and gentlemen, it can be worn as a tie or a scarf pin, on a collar or lapel. The pin comes complete with a silver-plated guard and is attractively packaged in a suede-cloth pochette, making it an ideal gift. The pin is priced at £4.50. If ordering by post, please enclose a stamped addressed envelope.



“ One of the glories of music is that it is an art of interpretation. The composer is silent without the performer. And it is the performer, so much more numerous, so much more public, who is perhaps most at hazard: loss of voice, injury to hand or lip, failure of ear or eye.

Be that as it may (for composers can also be in need), I am glad to be asked to say afresh what needs to be said again and now; if you have loved music, then please show that love by giving to the Musicians Benevolent Fund. They will know where and how to care on your behalf.”

SIR MICHAEL TIPPETT

Please send a donation, large or small.  
Philip Crammer, Chairman,  
MUSICIANS BENEVOLENT FUND,  
16 Ogle Street, London W1P 7LG.



**Weill: Seven Deadly Sins**  
Simon Rattle/Elise Ross  
ASD 4402\*

**Britten: Canadian Carnival, Young Apollo, Scottish Ballad, Four French Songs**  
Rattle/Donohoe/Fowke/Gomez  
ASD 4177\*

**Saint-Saëns: Piano Concerto No. 2**  
**Liszt: Piano Concerto No. 1**  
Simon Rattle/Cécile Ousset  
ASD 4307\*

**Berlioz: Requiem (Grande Messe des Morts)**  
Robert Tear/CBSO Chorus/CBSO/Louis Frémaux  
ESDW 718\*

**Weber: Clarinet Concertos and Concertino**  
Neeme Järvi/Janet Hilton  
ABRD 1058\*

**Janáček: Glagolitic Mass**  
Simon Rattle/Felicity Palmer/Ameral Gunson/John Mitchinson/Malcolm King/CBSO and CBSO Chorus  
ASD 4066\*

**Vaughan Williams: Toward the Unknown Region, Fantasia on a Theme of Thomas Tallis, Norfolk Rhapsody No. 1 etc.**  
Norman Del Mar/CBSO Chorus  
ASD 4089\*

**'Divertissement': Ibert, Satie, Berlioz**  
Frémaux  
ESD 7097\*

**Vaughan Williams, Elgar and Butterworth: songs**  
Vernon Handley/Robert Tear  
ASD 3896\*

**Bliss: Meditations on a Theme of John Blow, Overture 'Edinburgh', Discourse for Orchestra**  
Vernon Handley  
ASD 3878

**British Music for Film and Television**  
Marcus Dods  
ASD 3797\*

**Fauré: Requiem and Cantique de Racine**  
Frémaux/Norma Burrowes/Brian Rayner Cook/  
CBSO Chorus  
ASD 3501\*

**Walton: Façade Orchestral Suites, Suite Wise Virgins**  
Frémaux  
ASD 3317\*

**Lalo: Symphonie espagnole, Cello Concerto**  
Frémaux/Yan Pascal Tortelier/Paul Tortelier  
ASD 3209\*

**Saint-Saëns: Cello Concerto No. 1, "The Swan", Caprice for Violin, Wedding Cake Caprice for Piano etc.**  
Frémaux/Tortelier Family  
ASD 3058

**Saint-Saëns: Organ Symphony (Symphony No. 3)**  
Frémaux  
ESD 7038\*

**Coates: Three Elizabeths Suite, Merrymakers Overture, Jester at the Wedding, Calling all Workers etc.**  
Kilbey  
ESD 7005

**Ibert: Bacchanale, Louisville Concerto, Symphonie Marine, Bostoniana**  
Frémaux  
ASD 3176

**Arnold: Symphony No. 5, Cornish Dances, Peterloo Overture**  
Arnold  
ASD 2878

Deleted stock still available

**Popular selection: Bolero, Espana, Danse Macabre, Sorcerer's Apprentice, L'après-midi d'un Faune**  
Frémaux  
ASD 3008

\*denotes cassette available

Records, cassettes and further details available from the CBSO, 9 Margaret Street, Birmingham B3 3RP and leading record dealers as well as at the CBSO Sales and Information Desk before the concert and during the intervals of Birmingham promotions.

# Forthcoming Concerts

**Saturday 2 July 7.00pm**

Overture, Cockaigne  
Suite, Henry V  
A Sea Symphony

CHRISTOPHER SEAMAN  
SHEILA ARMSTRONG  
RICHARD JACKSON  
CBSO CHORUS  
Elgar  
Walton  
Vaughan Williams

**Tuesday 5 July 7.30pm**

Overture, Leonora No. 3  
Clarinet Concerto  
Suite, Masques et Bergamasques  
Suite, Háry János

MAURICE HANDFORD  
COLIN PARR  
Beethoven  
Mozart  
Fauré  
Kodály

**Wednesday 6 July 7.30pm**

**Tchaikovsky**  
Polonaise from Eugene Onegin  
Piano Concerto No. 1  
Symphony No. 5

MAURICE HANDFORD  
ALAN SCHILLER

**Presented in association with Rank Xerox (UK) Ltd.**

**Thursday 7 July 7.30pm**

Serenade in B flat (K361)  
The Four Seasons

SIMON HALSEY  
IONA BROWN  
Mozart  
Vivaldi

*Tickets for these concerts are available at Birmingham Town Hall Box Office:  
Tel. 021-236 3889*

## City of Birmingham Symphony Orchestra

**Principal Conductor and Artistic Adviser** Simon Rattle

**Principal Guest Conductor** Neeme Järvi

**Conductor Emeritus** Harold Gray OBE

---

### First Violins

Felix Kok *Leader*

Barrie Moore *Deputy Leader*

\* Philip Head

Gisela Hess

Enid Beaumont

Clare Clement Smith

Cathy Hamer

Mary Gilligan

David Gregory

Susan Evans

Paula Stephenson

Mark Robinson

Andrew Szirtes

Sheila Clarke

\* Stanley Smith

### Second Violins

\* Jeremy Ballard

Paul Smith

Henry Birch

Graeme Littlewood

Joy Blackburn

Warwick Lydiate

David Arlan

Brian Horgan

Dianne Youngman

Helen Dolby

Imogen Racz

Georgina Kirk

Anita Chidsey

Julie Storer

### Violas

Peter Cole

Gwyn Williams

Penelope Brown

Jennifer Whitelaw

Carol Millward

Diana Drewer

\* Margaret Artus

Julian Robinson

Rona Tattersdill

Elizabeth Shaw

Martin Hooley

Elizabeth Fryer

### Cellos

Michal Kaznowski

David Russell

Simon Clugston

David Powell

\* Alison Harper

Edward Boshier

Elspeth Cox

Ian Ludford

Jacqueline Tyler

Sarah Hedley-Miller

### Double Basses

John Tattersdill

Christopher Staunton

Charles Wall

Thomas Millar

Simon Phillips

Mark Doust

Geoffrey Smart

Mark Goodchild

### Flutes

Margaret Campbell

Colin Lilley

### Piccolo

Andrew Lane

### Oboes

Richard Weigall

Nigel Roberts

### Cor Anglais

Peter Walden

### Clarinets

Colin Parr

\* Martyn Davies

### Bass Clarinet

Ruth McDowall

### Bassoons

Andrew Barnell

John Schroder

### Double Bassoon

Toddy Harman

### Horns

Robert Blackburn

Peter Currie

Roger Clark

Peter Dyson

Simon Rayner

### Trumpets

\* Alan Whitehead

Wesley Warren

### Cornet

Roy Curran

### Trombones

Kenneth Shifrin

Danny Longstaff

### Bass Trombone

Brian Altham

### Tuba

Alan Sinclair

### Timpani

James Strebing

### Percussion

Huw Ceredig

Annie Oakley

Margaret Cotton

### Harp

Robert Johnston

---

\* *Recipients of the CBSO long service award*

This list is of members of the City of Birmingham Symphony Orchestra only and does not include extra players.